

NOTES:

Current Rating: 0.5AMP
 Contact Resistance: 50mΩ,max
 Voltage Rating: 50V AC/DC
 Insulation Resistance: 500MΩ, min
 Operation Temperature: -40°C to +105°C

Contact Material: Copper Alloy, T=0.2mm
 Fixed Tab: Brass, T=0.2mm
 Contact plating: Au or Sn Over Ni
 Insulator Material: Glass Filled Polyamide (UL94V-0)
 Color: Black

Mechanical Specifications:
 Soldering: Temperature: 230±5/°C Times: 5±0.5S
 Solder Resistance: Temperature: 245°C±9/°C Times: 3±0.5S

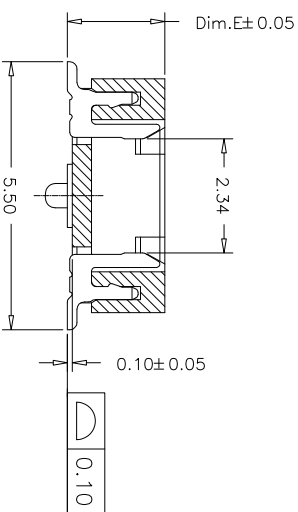
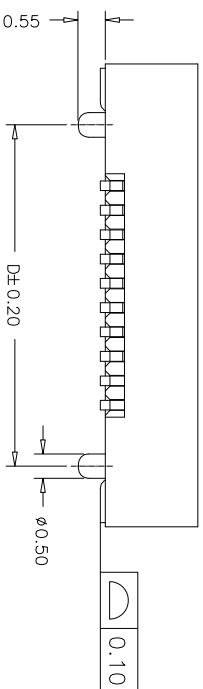
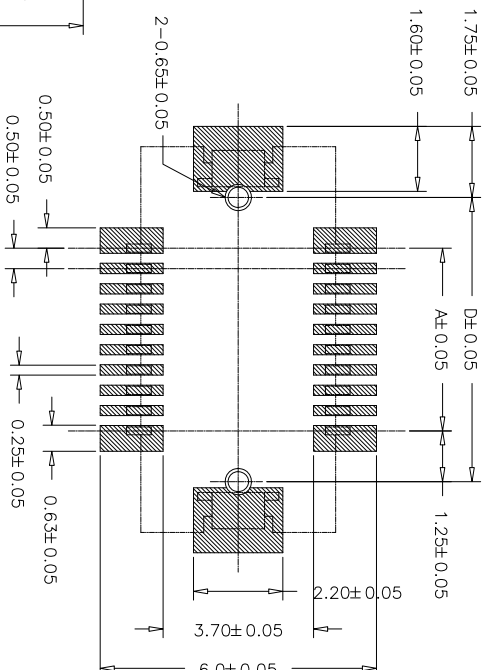
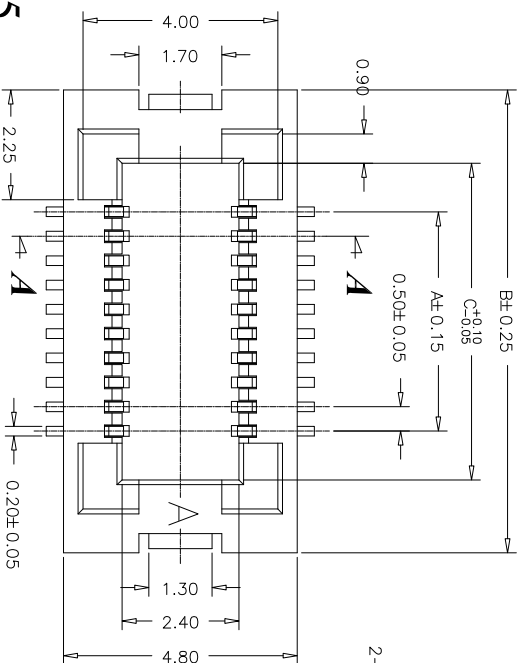
Dim.A=0.50*No. of Spaces
 Dim.B=Dim.A+5.0
 Dim.C=Dim.A+2.0
 Dim.D=Dim.A+2.5
 * Available in 10 through 80 circuits.

Ordering Information

BT3620 ** * 2 0 R 1 B15

No. of Pins per Row: 10~80
 Contact Plating: U=Gold Flash X=10u"Gold W=15u"Gold Y=20u"Gold Z=30u"Gold
 Dim."E" Height: 2=2.0mm B=2.5mm 3=3.0mm 4=4.0mm
 Pegs Option: W=With Pegs 0=Without Pegs
 Packing Option: R=Tape & Reel T=Tube

F=Gold Flash/Tin
 A=10u"Gold/Tin
 J=15u"Gold/Tin
 K=30u"Gold/Tin
 S=Tin Plated



A-A Section

REV	DATE	MODIFICATION DESCRIPTION	CHANGE	APPROVE	OPERATION	DRAW	SCALE	PART NO.
A0	09/01/18	NEW			XXX ±0.40	DESIGN	mm	BT3620***20R1B15
					XXX ±0.25	CHECK	A4	
					XXX ±0.15			
					Angle ± 3'			
					Dim TOL			



BMA TECHNOLOGIES LTD

0.5mm Pitch Board to Board Receptacle